

Erratum: Cancer stem cells in melanoma

C Regenbrecht, Y Welte, R Hugel, U Trefzer, FO Losch, J Adjaye and P Walden
ecancer 2 114 (2008)

An incorrect figure was included as figure 1, please see the corrected figure below.

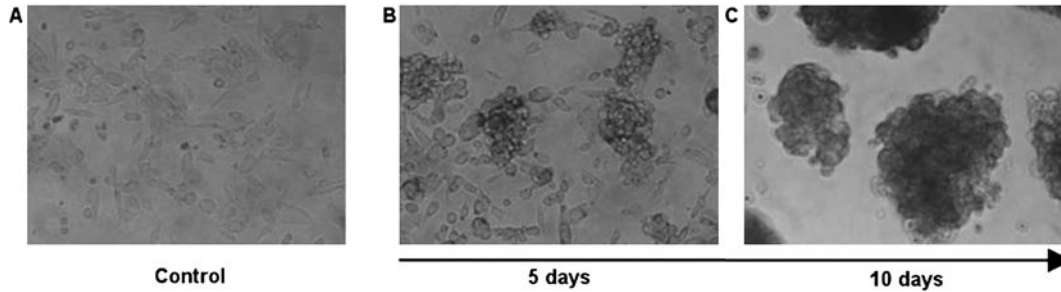


Figure 1: Change of phenotype of a melanoma cell line after cultivation in ES medium. Within ten days, originally adherent, large, elongated cells (A) formed clusters of non-adherent, small, round-shaped cells (B and C). Under ES culture condition, this phenotype remained stable for at least 8 weeks, whereas in standard medium an adherent monolayer was maintained.

Published: 19/03/2012

Received: 24/02/2012

ecancer 2012, 6:249 DOI: 10.3332/ecancer.2012.249

Copyright: © the authors; licensee ecancermedicalsecience. This is an Open Access article distributed under the terms of the Creative Commons Attribution License (<http://creativecommons.org/licenses/by/3.0>), which permits unrestricted use, distribution, and reproduction in any medium, provided the original work is properly cited.